



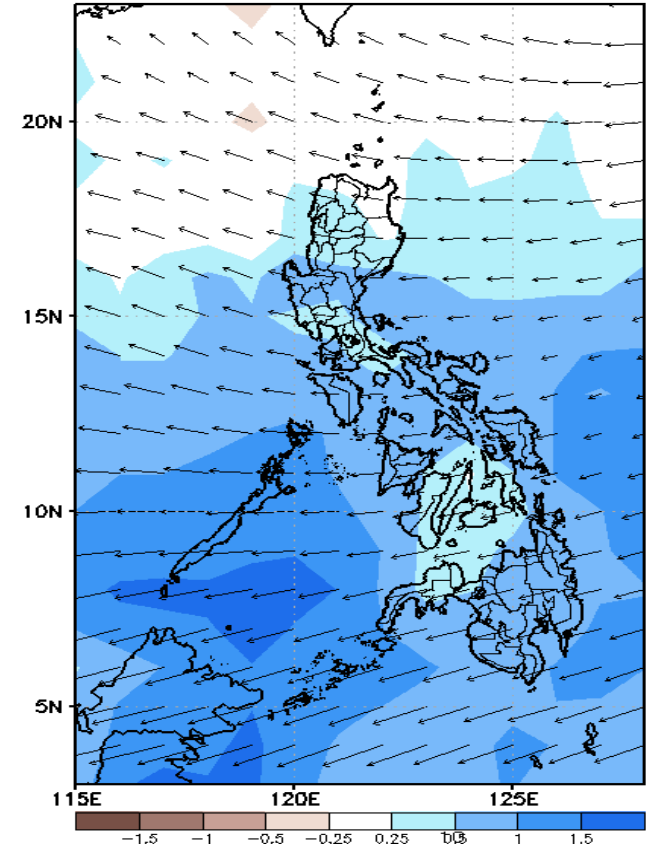
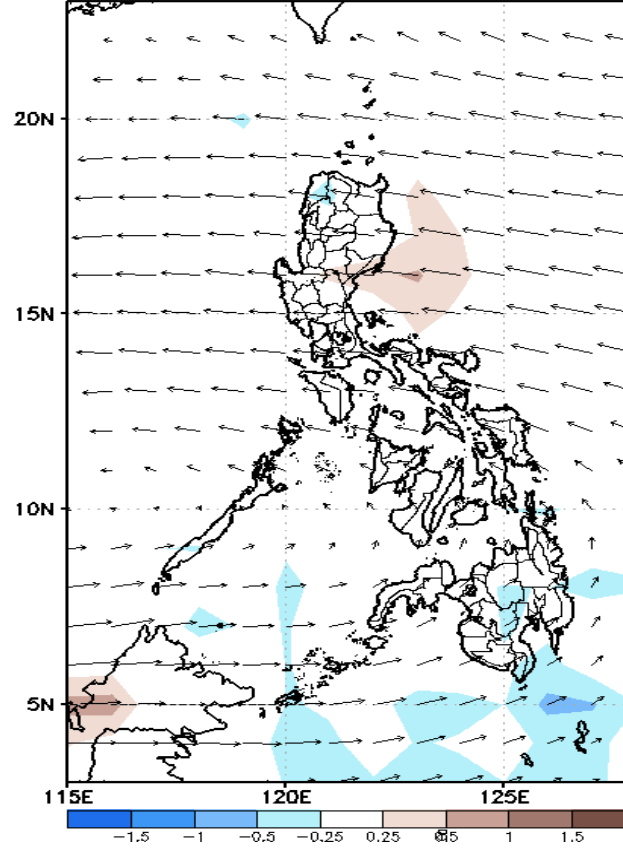
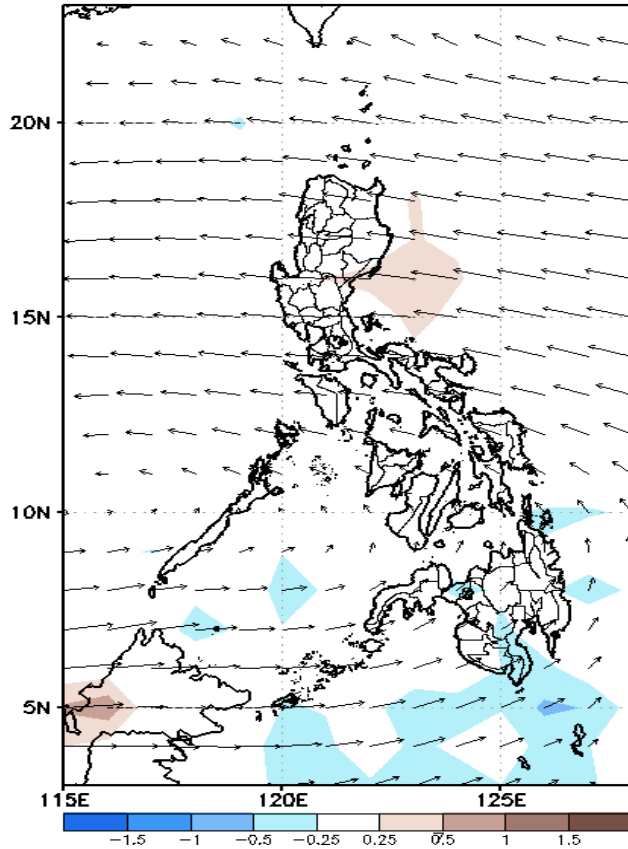
Week 1 & Week 2 Forecast for the Philippines using GEFS Model



GEFS Week-1 Forecasts: Divergence & Wind Anomaly

Week 1: Sep 16-22, 2021

GEFS Week-1 850-hPa Divergence and Wind Anom. Valid: 20210916 - 20210922
GEFS Week-1 700-hPa Divergence and Wind Anom. Valid: 20210916 - 20210922
GEFS Week-1 200-hPa Divergence and Wind Anom. Valid: 20210916 - 20210922

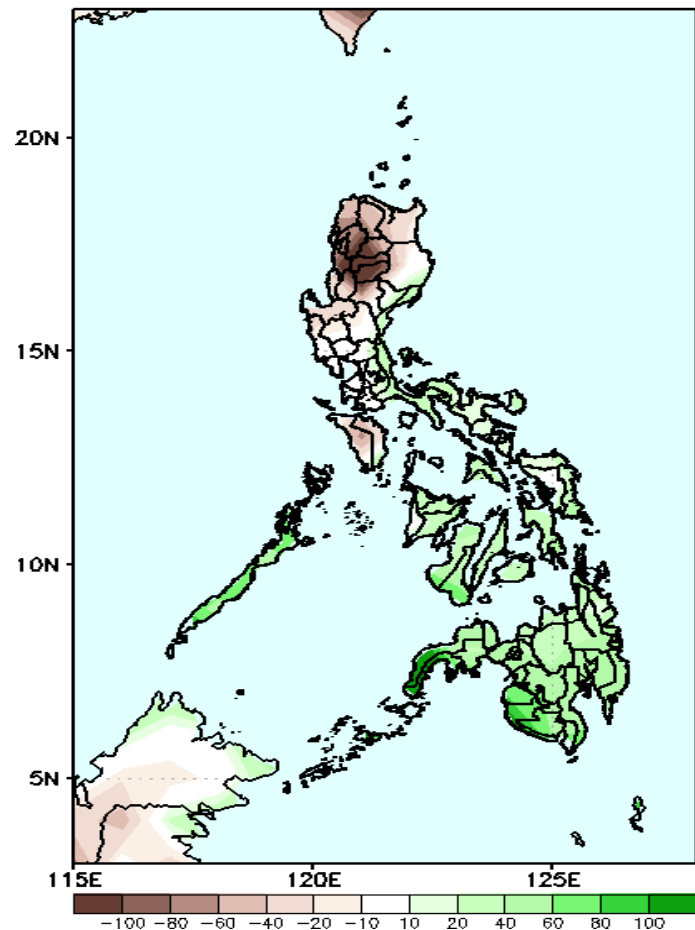


Upper and low level Divergence suggest likelihood of precipitation in most parts of the country. Southwest monsoon affecting some parts of Visayas and Mindanao. Easterlies affecting most parts of the country attributing to light and moderate rains due to thunderstorms during the forecast.

Precipitation Anomaly and Exceedance Probability > 25/50 mm

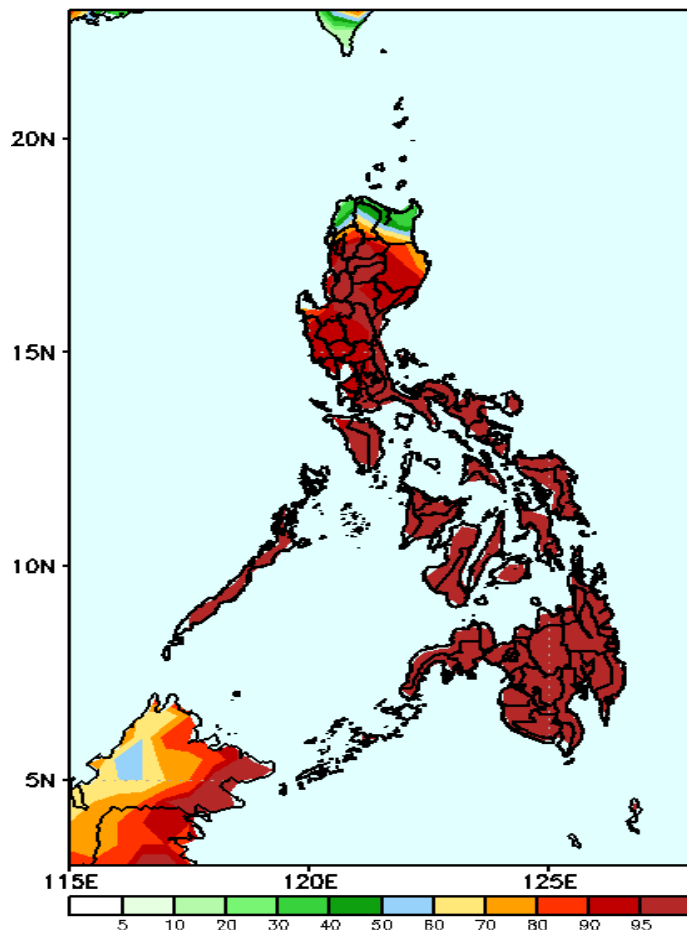
Week 1: Sep 16-22, 2021

GEFS Week-1 Precip Anomaly
Valid: 20210916 - 20210922



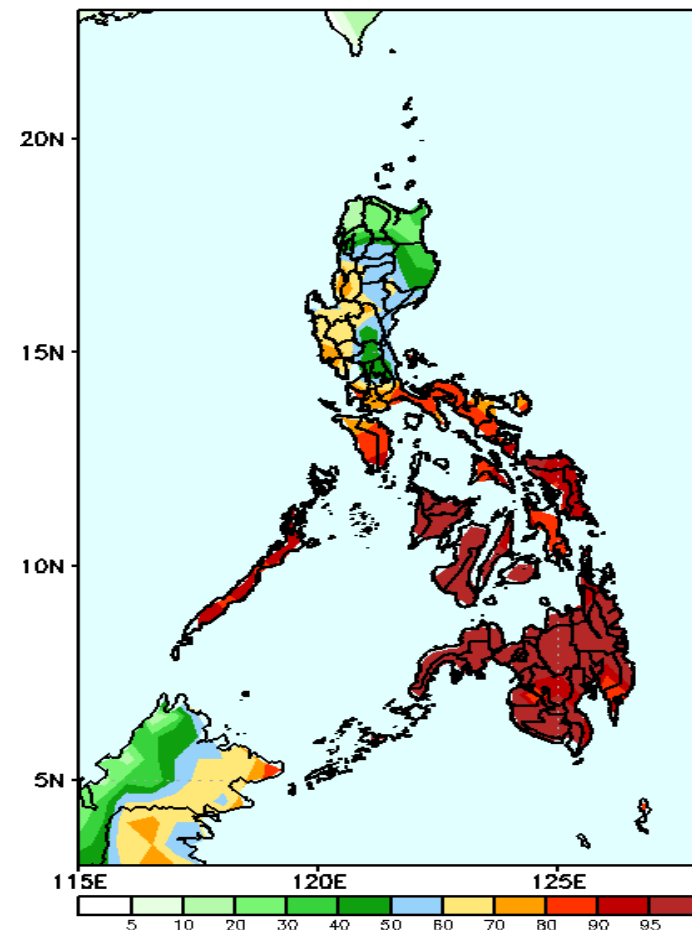
Rainfall deficit of up to 100mm is expected in Cordillera & Ilocos Region while 40-100mm increase of rainfall in in most parts of Visayas and Mindanao especially in the western section during the forecast period.

GEFS Week-1 Exceedance Prob. > 25mm
Valid: 20210916 - 20210922



High probability of rainfall to exceed 25mm in most parts of the country is expected except in Ilocos Norte, Apayao & Cagayan during the forecast period.

GEFS Week-1 Exceedance Prob. > 50mm
Valid: 20210916 - 20210922

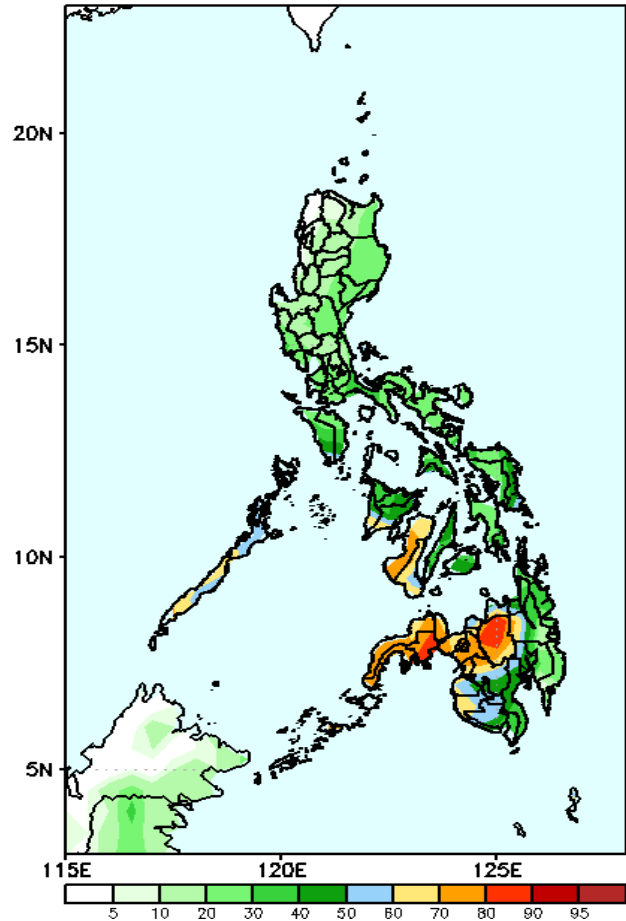


High probability of rainfall to exceed 50mm in most parts of the country is expected except in Northern & Eastern Luzon during the forecast period.

Exceedance Probability > 100/150/200 mm

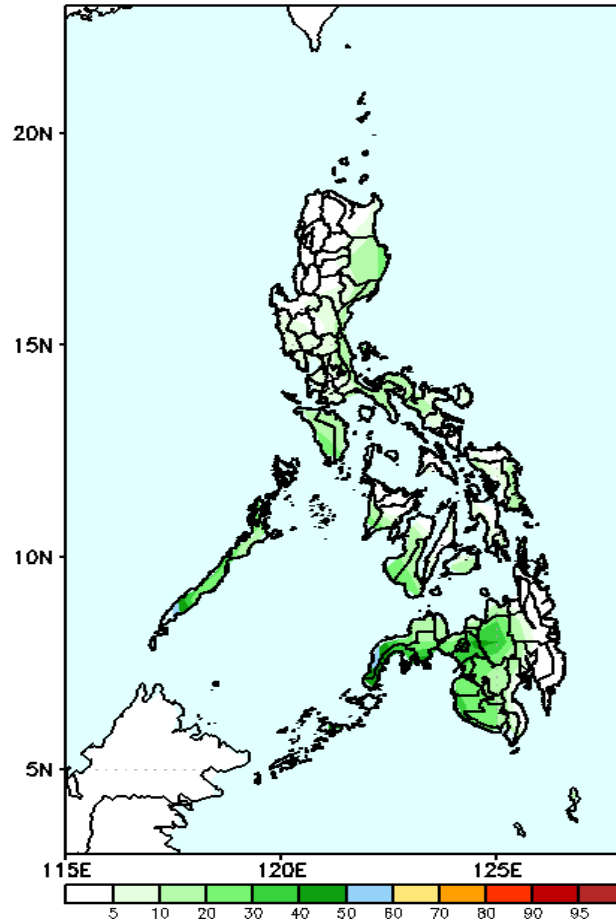
Week 1: Sep 16-22, 2021

GEFS Week-1 Exceedance Prob. > 100mm
Valid: 20210916 - 20210922



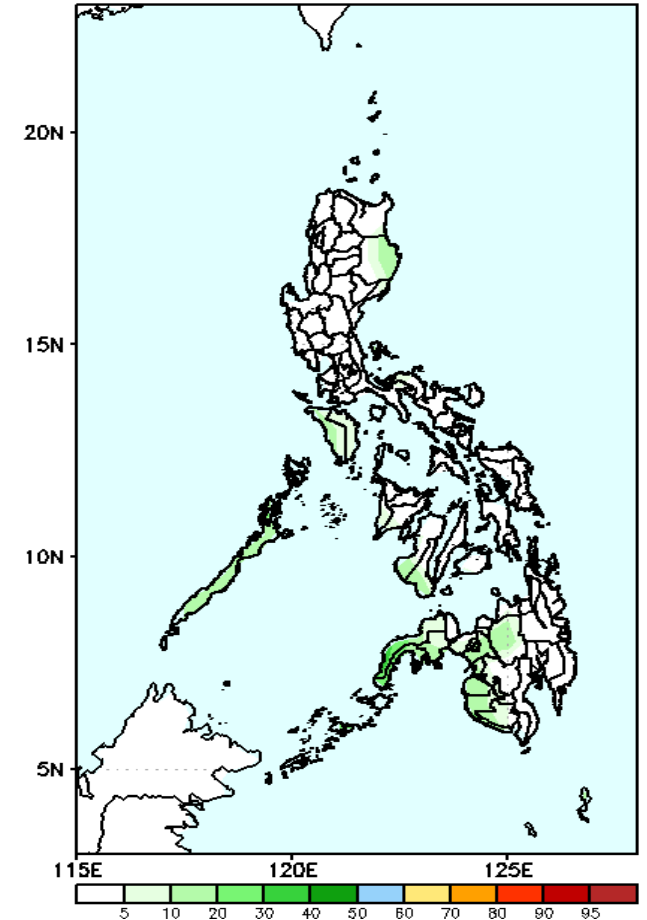
Less probability of rainfall to exceed 100mm in most parts of the country is expected except in Negros Island, Bukidnon and western parts of Mindanao during the forecast period.

GEFS Week-1 Exceedance Prob. > 150mm
Valid: 20210916 - 20210922



Less probability of rainfall to exceed 150mm in most parts of the country is expected during the forecast period.

GEFS Week-1 Exceedance Prob. > 200mm
Valid: 20210916 - 20210922



Less probability of rainfall to exceed 200mm in most parts of the country is expected during the forecast period.



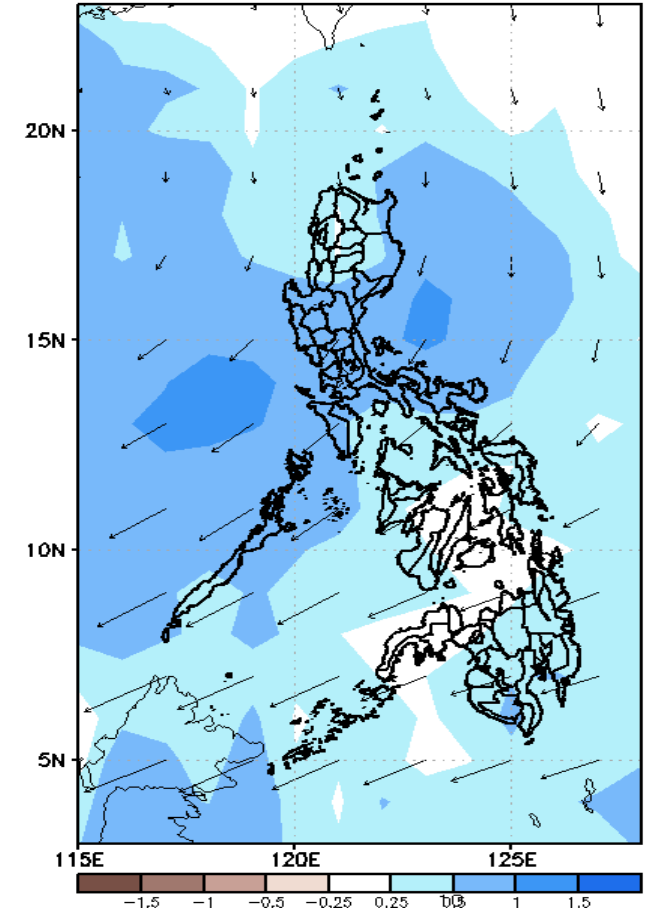
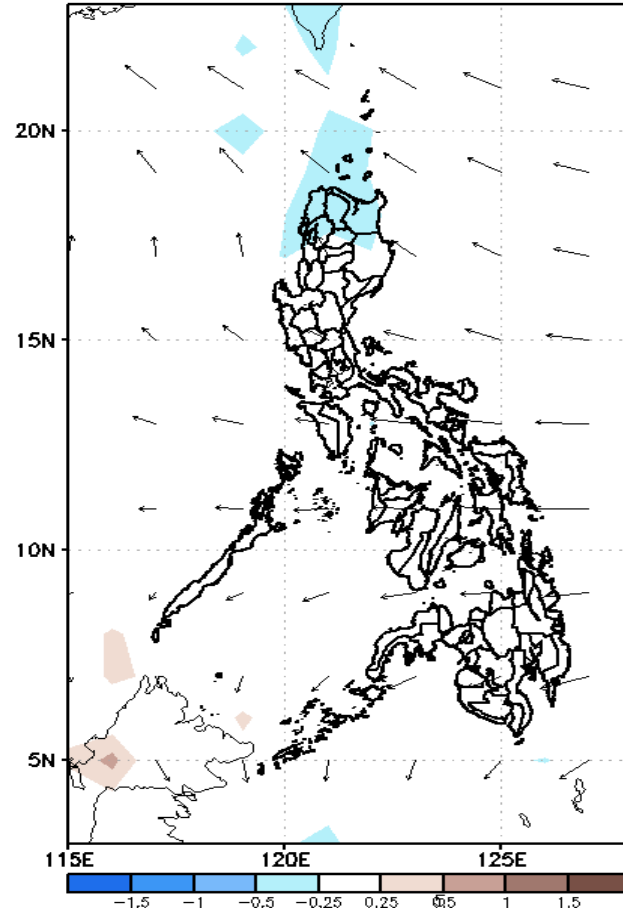
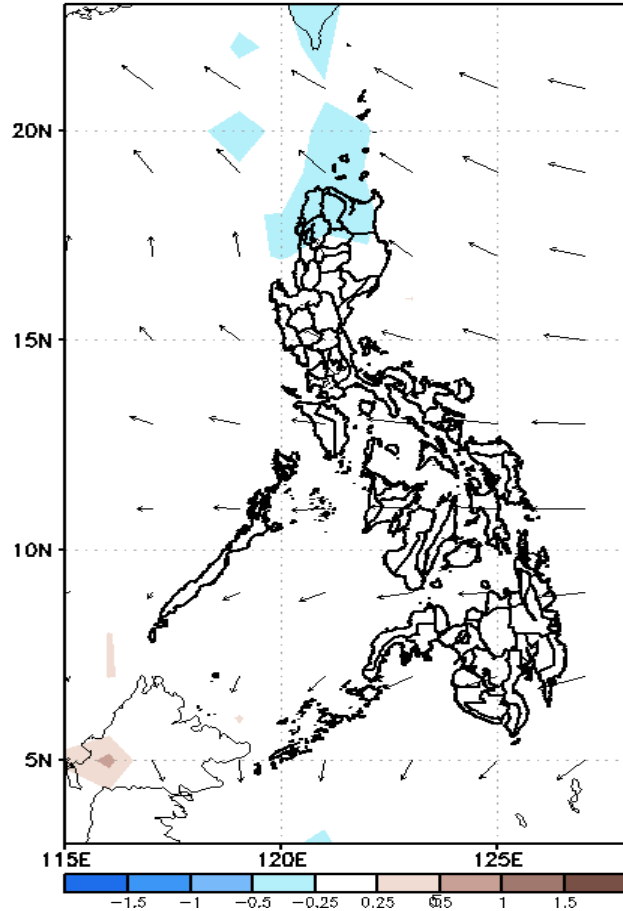
GEFS Week-2 Forecasts: Divergence & Wind Anomaly

Week 2: Sep 23-29, 2021

GEFS Week-2 850-hPa Divergence and Wind Anom
Valid: 20210923 - 20210929

GEFS Week-2 700-hPa Divergence and Wind Anom
Valid: 20210923 - 20210929

GEFS week-2 200-hPa Divergence and Wind Anom
Valid: 20210923 - 20210929

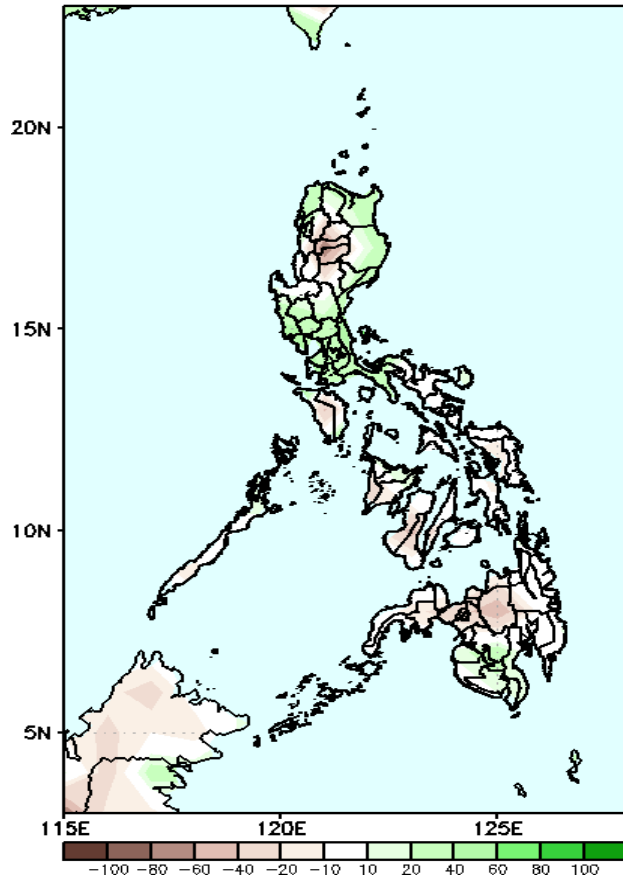


Upper and low level Divergence suggest likelihood of precipitation in most parts of the country. Easterlies affecting most parts of the country attributing to light and moderate rains due to thunderstorms during the forecast.

Precipitation Anomaly and Exceedance Probability > 25/50 mm

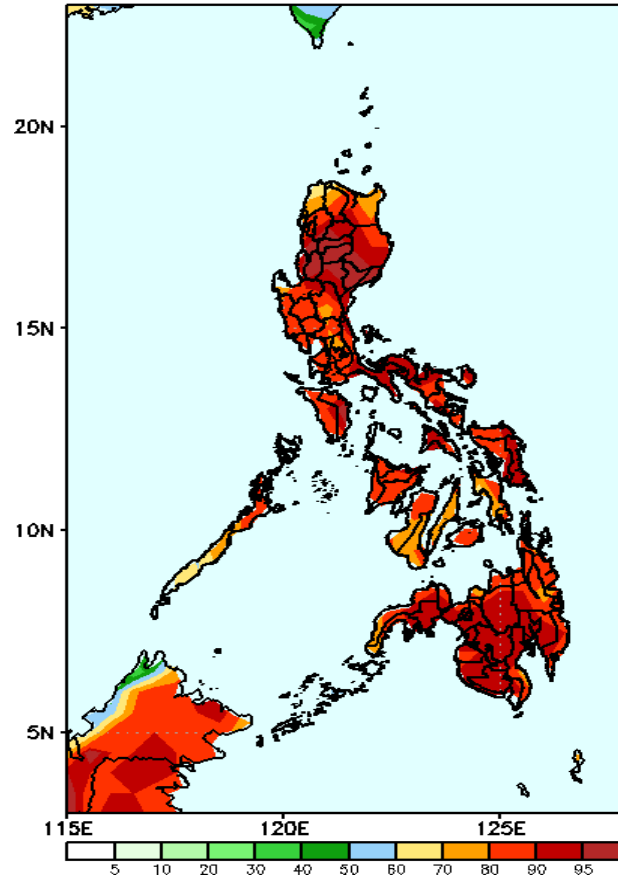
Week 2: Sep 23-29, 2021

GEFS Week-2 Precip Anomaly
Valid: 20210923 - 20210929



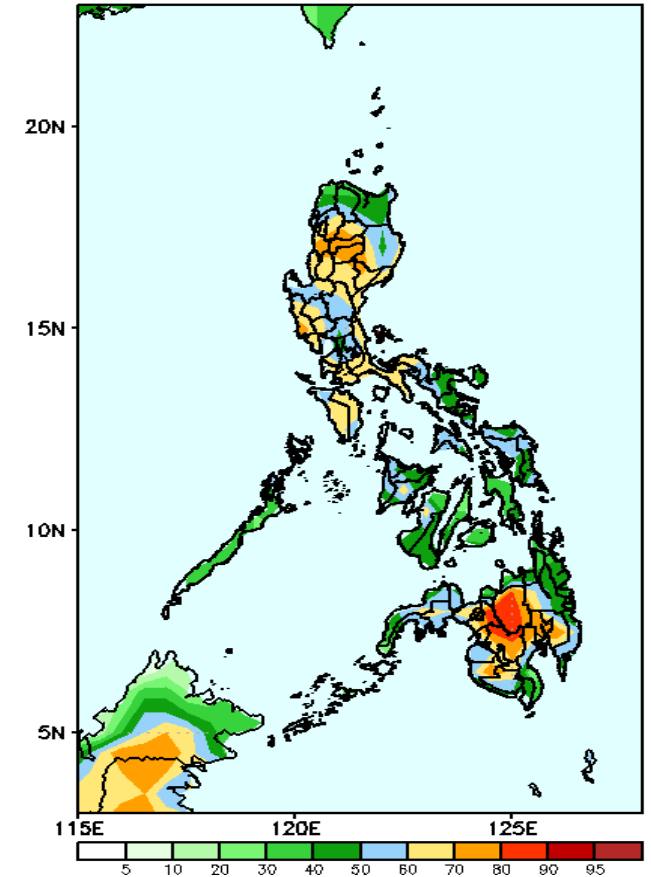
Increase of rainfall of 60-100mm is expected in most parts of the country except in Cordillera Region where 40-100mm rainfall deficit during the forecast period.

GEFS Week-2 Exceedance Prob. > 25mm
Valid: 20210923 - 20210929



High probability of rainfall to exceed 25mm in most parts of the country is expected during the forecast period

GEFS Week-2 Exceedance Prob. > 50mm
Valid: 20210923 - 20210929

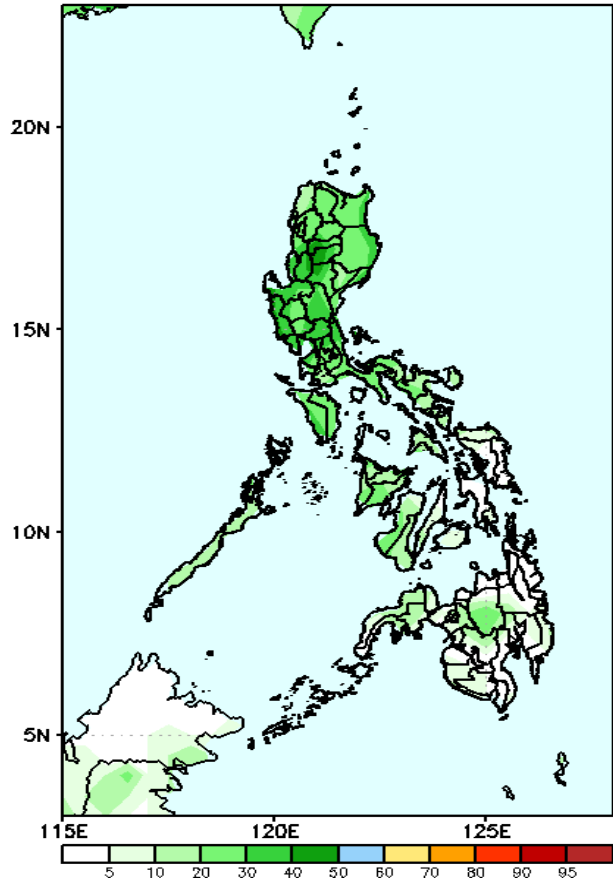


High probability of rainfall to exceed 50mm in Bukidnon & Lanao del Sur while 40-80% chance for the rest of the country during the forecast period.

Exceedance Probability > 100/150/200 mm

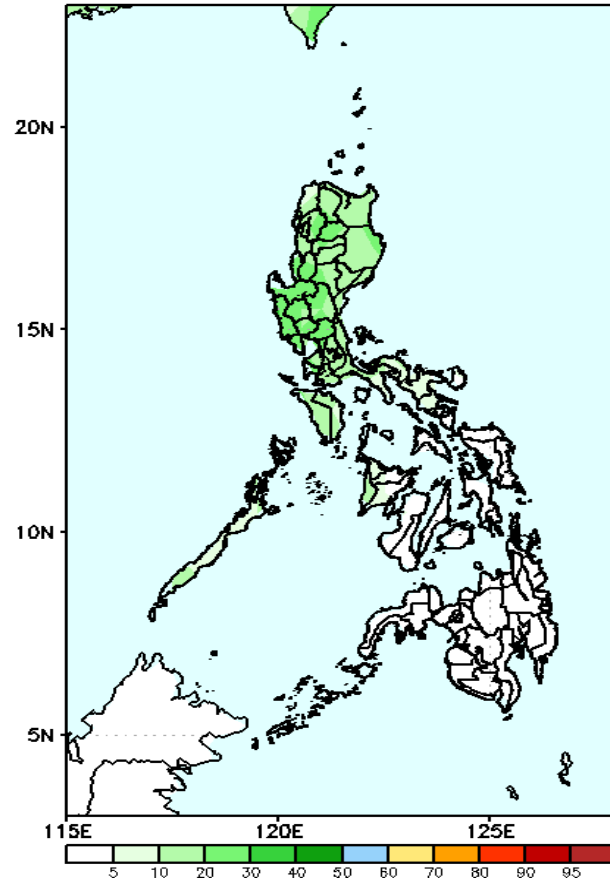
Week 2: Sep 23-29, 2021

GEFS Week-2 Exceedance Prob. > 100mm
Valid: 20210923 - 20210929



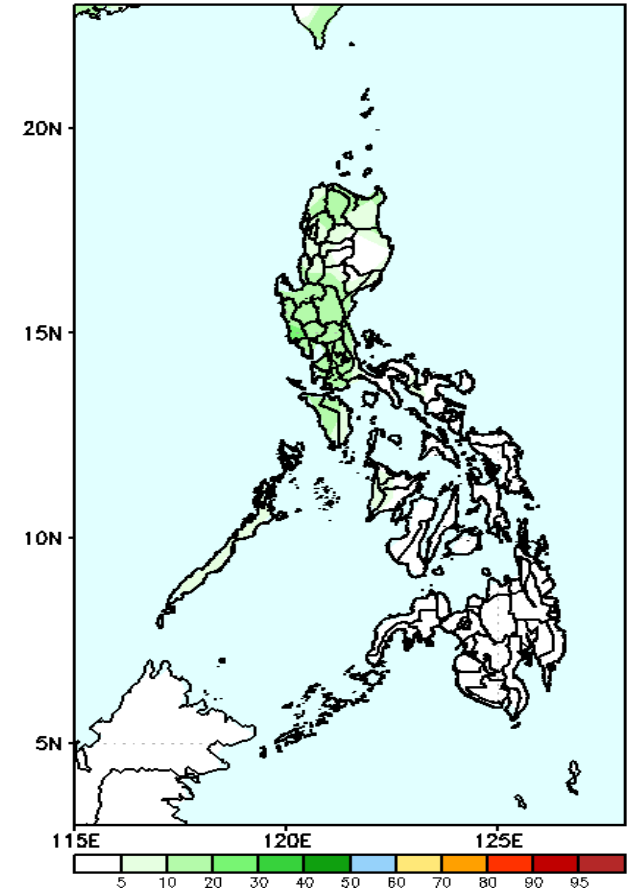
Less probability of rainfall to exceed 100mm in most parts of the country is expected during the forecast period.

GEFS Week-2 Exceedance Prob. > 150mm
Valid: 20210923 - 20210929



Less probability of rainfall to exceed 150mm in most parts of the country is expected during the forecast period.

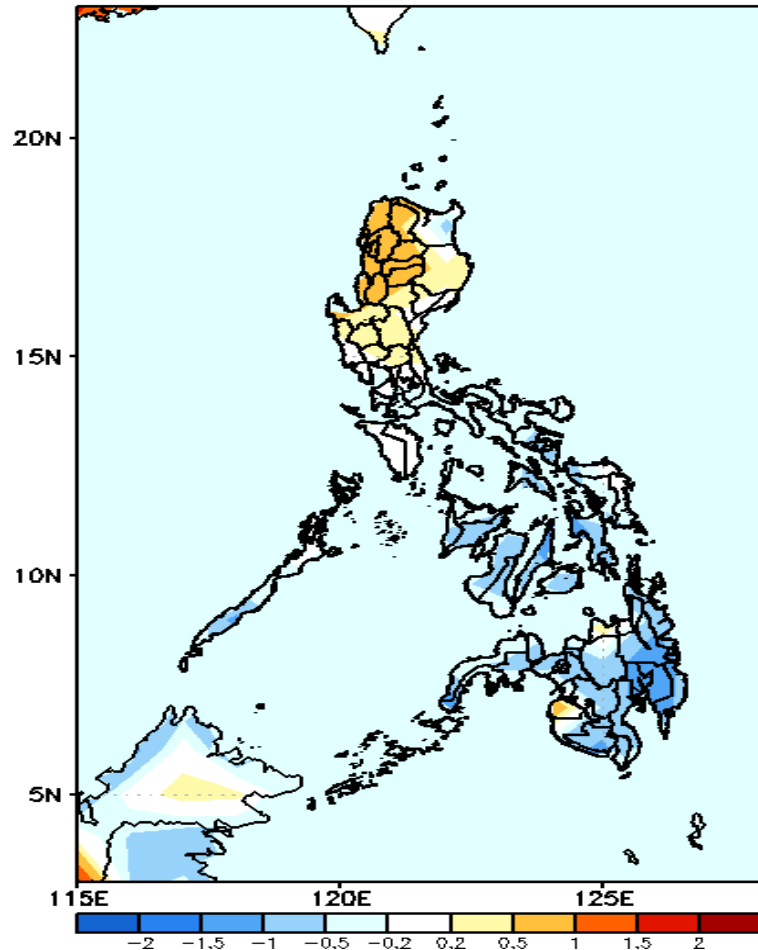
GEFS Week-2 Exceedance Prob. > 200mm
Valid: 20210923 - 20210929



Less probability of rainfall to exceed 200mm in most parts of the country is expected during the forecast period.

GEFS Week-1 & 2 Forecasts: T2m Anomaly

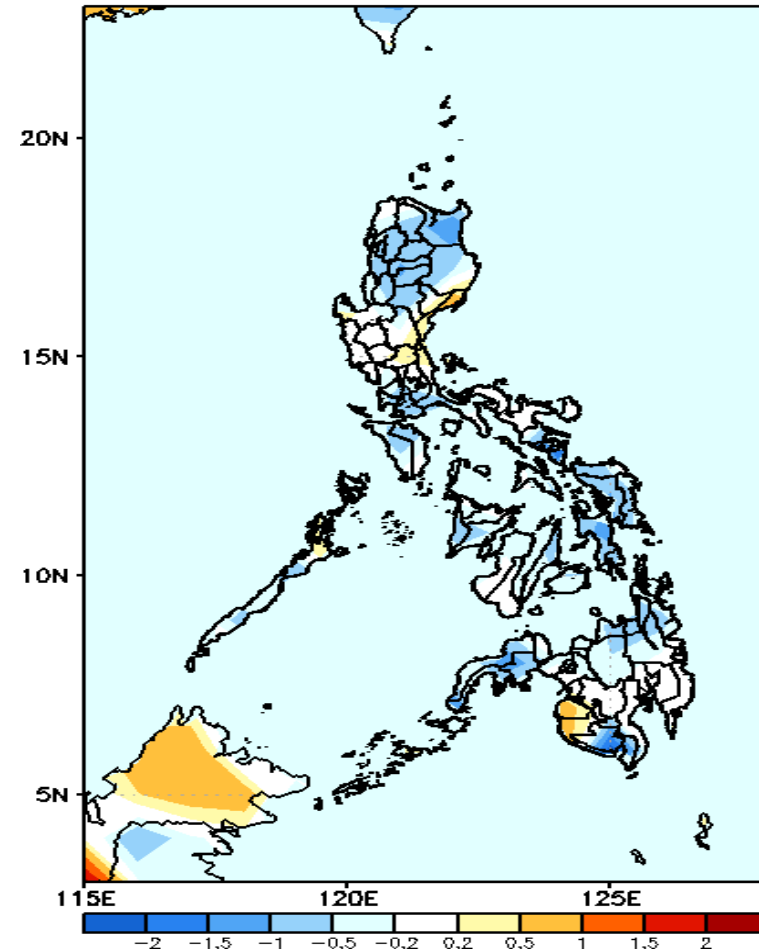
GEFS Week-1 T2m Anomaly
Valid: 20210916 - 20210922



2m Temperature Week 1: Sep 16-22, 2021

Average to slightly warmer than average surface air temperature will likely experience in most parts of Luzon while slightly cooler to cooler than average temperature in Visayas and Mindanao.

GEFS Week-2 T2m Anomaly
Valid: 20210923 - 20210929



2m Temperature Week 2: Sep 23-29, 2021

Average to slightly cooler than average surface air temperature will likely experience in most parts of the country except in Maguindanao and Sultan Kudarat where slightly warmer temperature is expected.